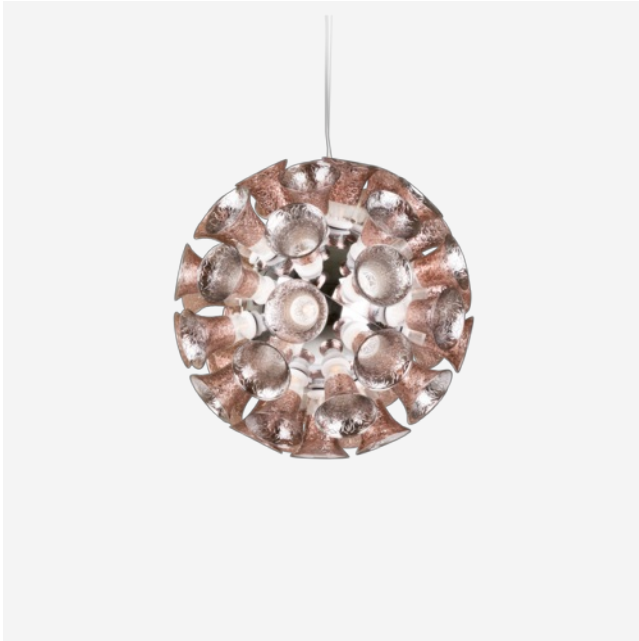


# Chalice

EDWARD VAN VLIET



The Chalice Lamp captures the essential grace of glass. Blossoms of tulip-like flowers define the lamp, diffusing light naturally and reflecting the floral pattern enclosed within each chalice.

## *Detailing*



Thanks to the dimmable LED lamps hidden behind the chalices, light is diffused in a natural way and projected by the copper-plated signature flowers.

## *Colours*



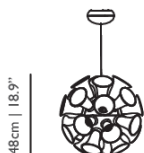
Chrome

Metallic Grey

# Chalice / 24

## Dimensions

48cm | 18.9"



48cm | 18.9"

## Product

**WIDTH** 48cm | 18.9"  
**HEIGHT** 48cm | 18.9"  
**DEPTH** 48cm | 18.9"  
**DIAMETER** 48cm | 18.9"  
**WEIGHT NETTO** 7kg | 15.43lbs

## Packaging

**WIDTH** 39.3cm | 15.5"  
**HEIGHT** 46.8cm | 18.4"  
**CUBAGE** 0.16m<sup>3</sup> | 5.52ft<sup>3</sup>  
**LENGTH** 85cm | 33.5"  
**WEIGHT** 20kg | 44.09lbs

## Technical CE

### MATERIAL

Chromed or powder coated metal sphere, bakelite and glass chalices.

### ENERGY LABEL

B

### INSTALLATION REQUIRED

Yes

### LIGHTSOURCE INCLUDED

Yes

### NUMBER OF LIGHTSOURCES

24

### INPUT VOLTAGE

230V

### FREQUENCY

50/60

### MAX POWER CONSUMPTION

16W

### LAMPHOLDER

LED (Solid state)

### LIFETIME

50000 hours

### CABLE COLOUR

Transparent with tinned cores

### CABLE LENGTH

400cm | 157.5"; 1000cm | 393.7"

### CANOPY

Brushed steel pebble

### COLOUR TEMPERATURE

2700 K

### CRI

85

### LIGHT OUTPUT

450 lm

### DIMMING & LIGHTING CONTROL

Mains, Trailing edge, Reverse phase

*See last page for more information about the dimming possibilities.*



## Technical cULus

**MATERIAL**

Chromed or powder coated metal sphere, bakelite and glass chalices.

**ENERGY LABEL**

B

**LIGHTSOURCE INCLUDED**

Yes

**INPUT VOLTAGE**

120V

**MAX POWER CONSUMPTION**

16W

**LIFETIME**

50000 hours

**CABLE LENGTH**

400cm | 157.5"; 1000cm | 393.7"

**COLOUR TEMPERATURE**

2700 K

**LIGHT OUTPUT**

450 lm

**INSTALLATION REQUIRED**

Yes

**NUMBER OF LIGHTSOURCES**

24

**FREQUENCY**

50/60

**LAMPHOLDER**

LED (Solid state)

**CABLE COLOUR**

Transparent with tinned cores

**CANOPY**

Brushed steel pebble

**CRI**

85

**DIMMING & LIGHTING CONTROL**

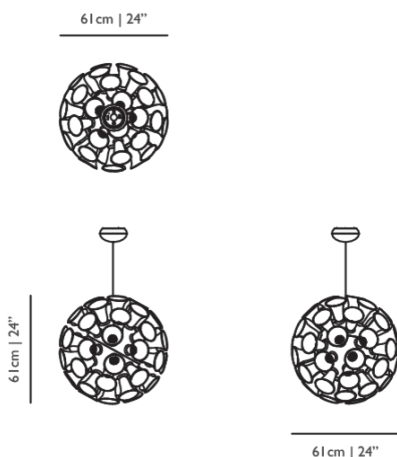
Mains, Trailing edge, Reverse phase

*See last page for more information about the dimming possibilities.*



## Chalice / 48

### Dimensions



### Product

**WIDTH** 61cm | 24"  
**HEIGHT** 61cm | 24"  
**DEPTH** 61cm | 24"  
**DIAMETER** 61cm | 24"  
**WEIGHT NETTO** 7kg | 15.43lbs

### Packaging

**WIDTH** 46.8cm | 18.4"  
**HEIGHT** 57.8cm | 22.8"  
**CUBAGE** 0.34m<sup>3</sup> | 12.18ft<sup>3</sup>  
**LENGTH** 127.5cm | 50.2"  
**WEIGHT** 30kg | 66.14lbs

### Technical CE

**MATERIAL**

Chromed or powder coated metal sphere, bakelite and glass chalices.

**ENERGY LABEL**

B

**LIGHTSOURCE INCLUDED**

Yes

**INPUT VOLTAGE**

230V

**MAX POWER CONSUMPTION**

32W

**LIFETIME**

50000 hours

**CABLE LENGTH**

400cm | 157.5"; 1000cm | 393.7"

**COLOUR TEMPERATURE**

2700 K

**LIGHT OUTPUT**

900 lm

**INSTALLATION REQUIRED**

Yes

**NUMBER OF LIGHTSOURCES**

48

**FREQUENCY**

50/60

**LAMPHOLDER**

LED (Solid state)

**CABLE COLOUR**

Transparent with tinned cores

**CANOPY**

Brushed steel pebble

**CRI**

85

**DIMMING & LIGHTING CONTROL**

Mains, Trailing edge, Reverse phase

*See last page for more information about the dimming possibilities.**Technical cULus***MATERIAL**

Chromed or powder coated metal sphere, bakelite and glass chalices.

**ENERGY LABEL**

B

**LIGHTSOURCE INCLUDED**

Yes

**INPUT VOLTAGE**

120V

**MAX POWER CONSUMPTION**

32W

**LIFETIME**

50000 hours

**CABLE LENGTH**

400cm | 157.5"; 1000cm | 393.7"

**COLOUR TEMPERATURE**

2700 K

**LIGHT OUTPUT**

900 lm

**INSTALLATION REQUIRED**

Yes

**NUMBER OF LIGHTSOURCES**

48

**FREQUENCY**

50/60

**LAMPHOLDER**

LED (Solid state)

**CABLE COLOUR**

Transparent with tinned cores

**CANOPY**

Brushed steel pebble

**CRI**

85

**DIMMING & LIGHTING CONTROL**

Mains, Trailing edge, Reverse phase

*See last page for more information about the dimming possibilities.*



## *Dimming & Lighting Control*

### *Mains, Trailing edge, Reverse phase*

The luminaire is dimmable by using an external Electronic Low Voltage dimmer. The dimmer is usually mounted on an existing wall socket and there is no need to change your home's wiring. On the dimmer it should show that it is a LED dimmer, suitable for 5 Watts or lower and C-type capable. Dimming is less fluent and can come with some flicker, a beep or a buzz.

Compatible models: 24 CE, 24 cULus, 48 CE, 48 cULus

---